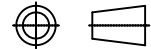


Electrical Properties	
Frequency Range	2.4~2.5GHZ
Impedance	50 Ω
V.S.W.R.	≤2.0
Radiation	Omni
Gain	2dBi
Polarization	Vertical
Mechanical Properties	
Whip	ABS
Standard Connector	SMA
Weight	- g(est)
Operating Temp	-40°~+85°

BOM

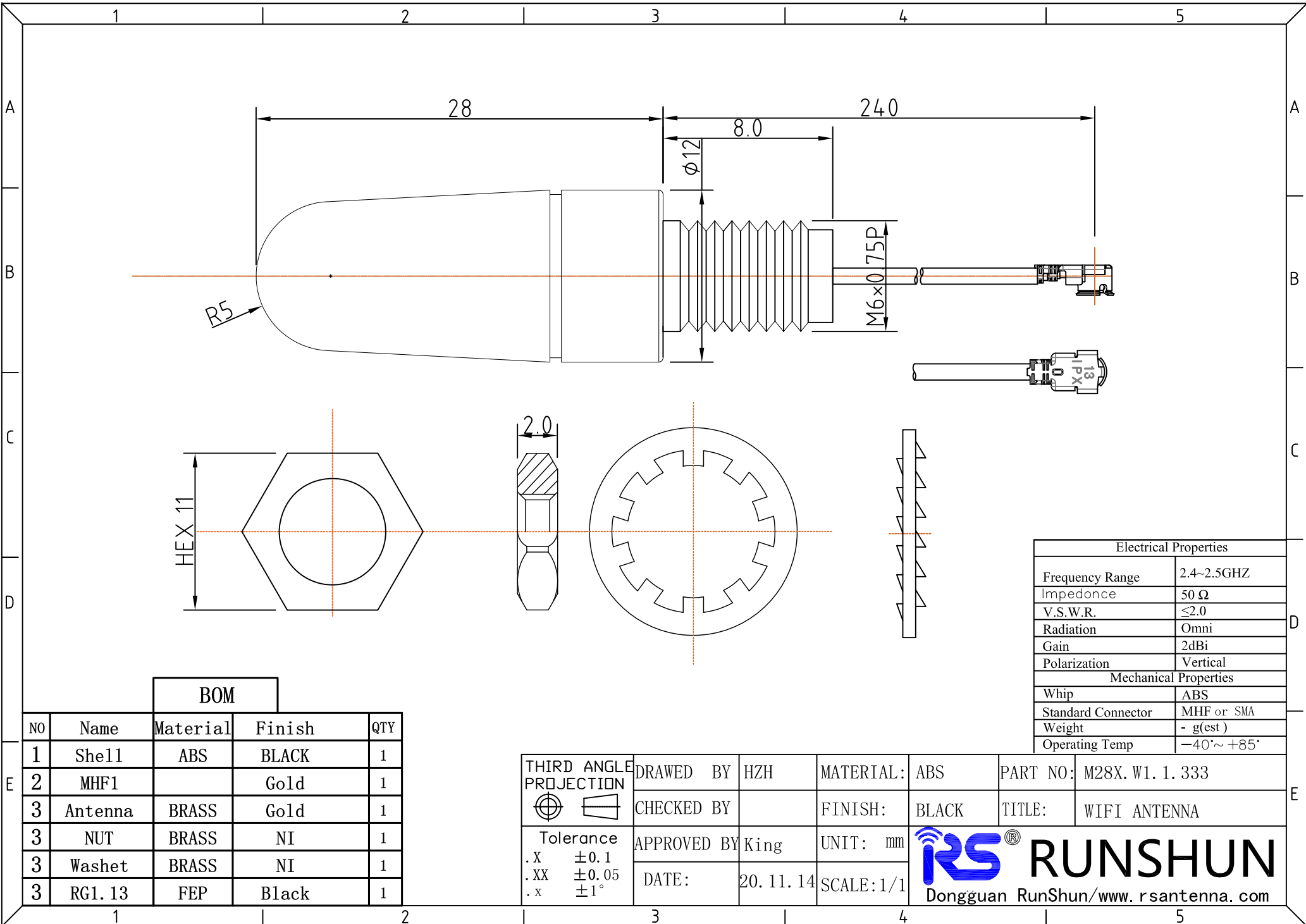
NO	Name	Material	Finish	QTY
1	Shell	ABS	BLACK	1
2	SMA	BRASS	Gold	1
3	Antenna	BRASS	Gold	1
3	NUT	BRASS	NI	1
3	Washet	BRASS	NI	1
3	RG174	PVC	Black	1

THIRD ANGLE PROJECTION



Tolerance
 .X ±0.1
 .XX ±0.05
 .x ±1°

DRAWN BY	HZH	MATERIAL:	ABS	PART NO:	M28X.W1.1.334
CHECKED BY		FINISH:	BLACK	TITLE:	WIFI ANTENNA
APPROVED BY	King	UNIT:	mm	 RUNSHUN Dongguan RunShun/www.rsantenna.com	
DATE:	20.11.14	SCALE:	1/1		



BOM

NO	Name	Material	Finish	QTY
1	Shell	ABS	BLACK	1
2	MHF1		Gold	1
3	Antenna	BRASS	Gold	1
3	NUT	BRASS	NI	1
3	Washet	BRASS	NI	1
3	RG1.13	FEP	Black	1

Electrical Properties	
Frequency Range	2.4~2.5GHZ
Impedance	50 Ω
V.S.W.R.	≤2.0
Radiation	Omni
Gain	2dBi
Polarization	Vertical
Mechanical Properties	
Whip	ABS
Standard Connector	MHF or SMA
Weight	- g(est)
Operating Temp	-40°~+85°

THIRD ANGLE PROJECTION Tolerance .X ±0.1 .XX ±0.05 .x ±1°	DRAWN BY	HZH	MATERIAL:	ABS	PART NO:	M28X.W1.1.333
	CHECKED BY		FINISH:	BLACK	TITLE:	WIFI ANTENNA
	APPROVED BY	King	UNIT:	mm	RUNSHUN Dongguan RunShun/www.rsantenna.com	
	DATE:	20.11.14	SCALE:	1/1		

产品照片
Product Photos

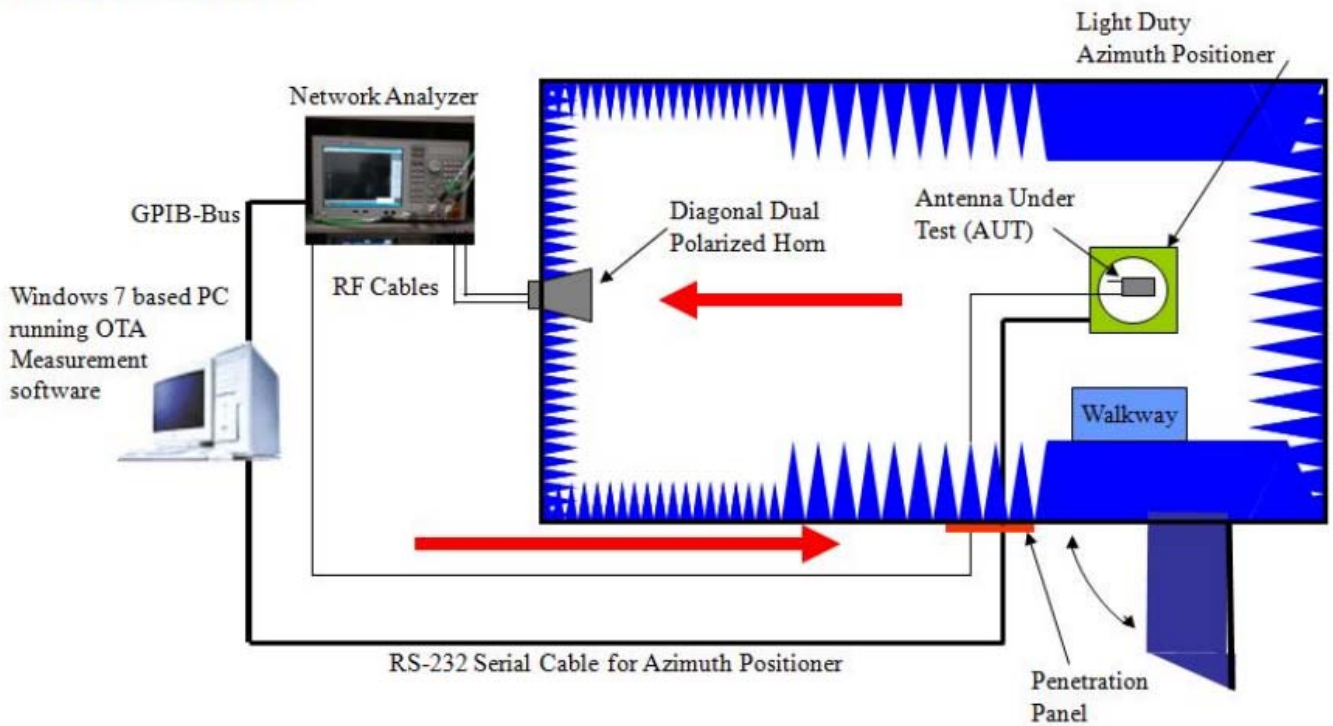


产 品 规 格 概 述
Overview of product specification

Electrical properties	
Frequency	2.4~2.5GHZ
Impedance	50 ohm Nominal
Return Loss	-10 dBi
VSWR Port 1&2	2.0:1 MAX
Gain	2.4GHZ 2.11dBi 2.45GHZ 2.34dBi 2.5GHZ 2.19dBi
Connector	RP-SMA Male
Cable length	RG174 BLACK
Coax cable loss	1.3dB/M~2.4GHz 1.45dB/M~2.45GHz 1.56dB/M~2.5GHz
Mechanical Properties	
Radome	UV Resistant POM
Operating Temp	-40°C to +85°C
Radome Color	Black

產品圖紙
2D Drawing

Passive mode

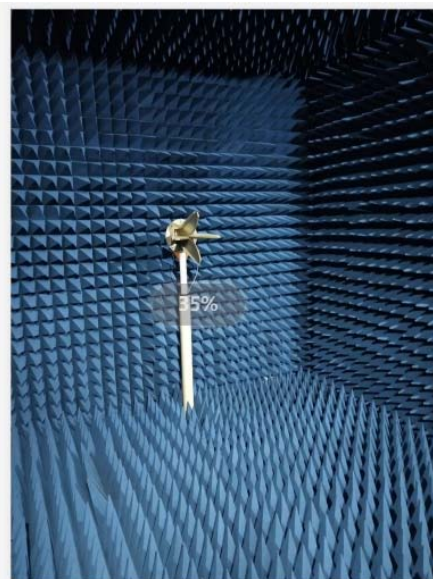


TEST INSTRUMENT :

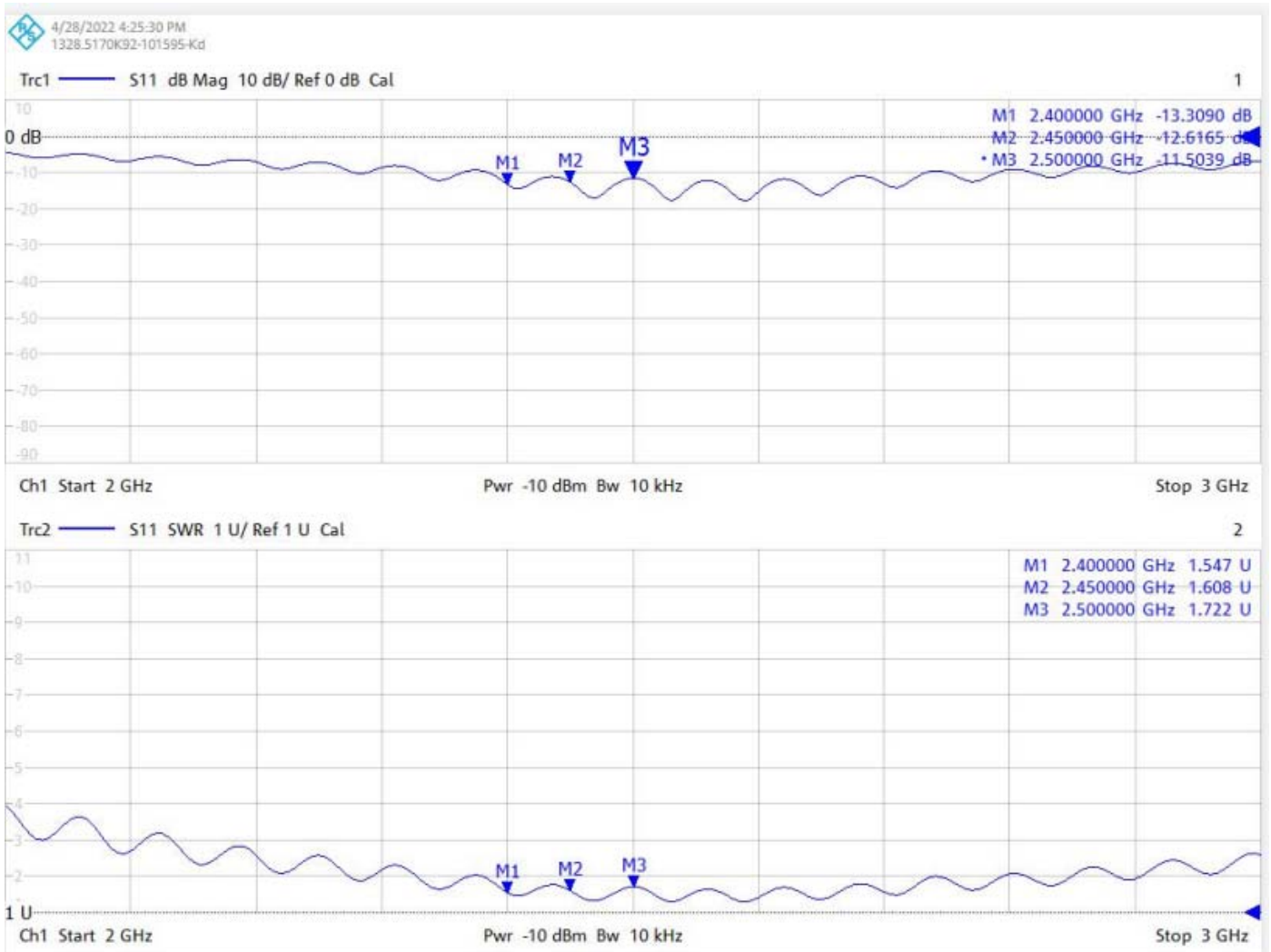
1. AGILENT E5071C NETWORK ANALYZER
2. 3D OTA Chamber(WanShih)

Anechoic Chamber External Dimensions

(L x W x H): 8m x 4m x 4m



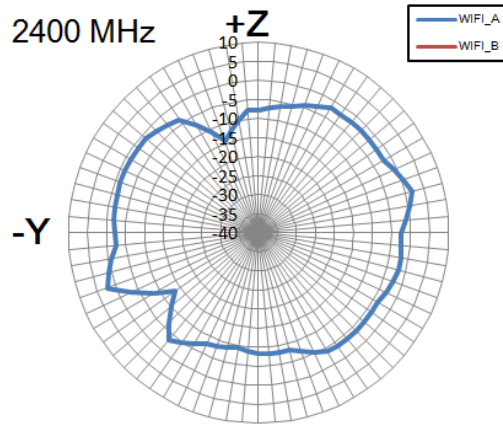
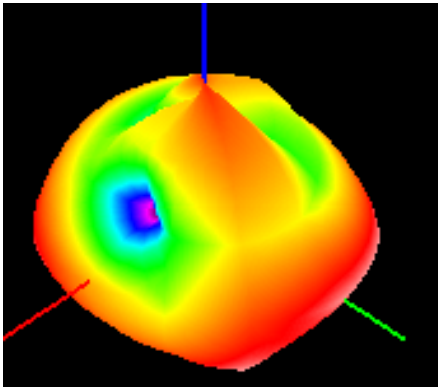
VSWR



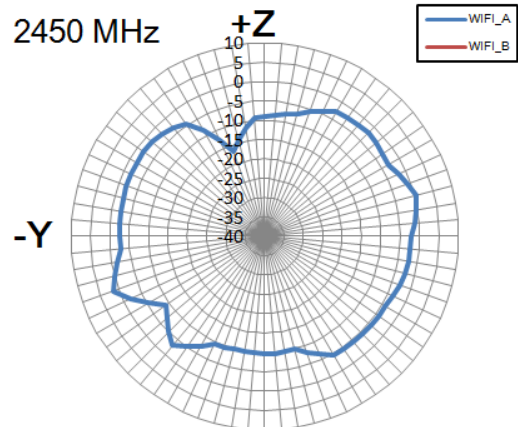
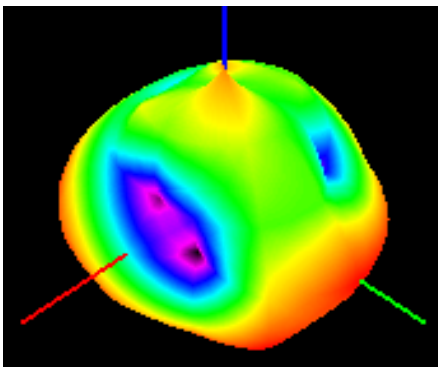
Frequency(MHz)	2.4GHz	2.45GHz	2.5GHz
S11(-10DBi)	13.3	12.616	11.5
VSWR(≤ 3.0)	1.547	1.608	1.722

Radiation Patterns

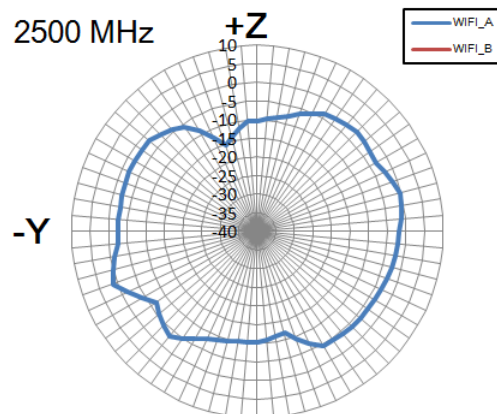
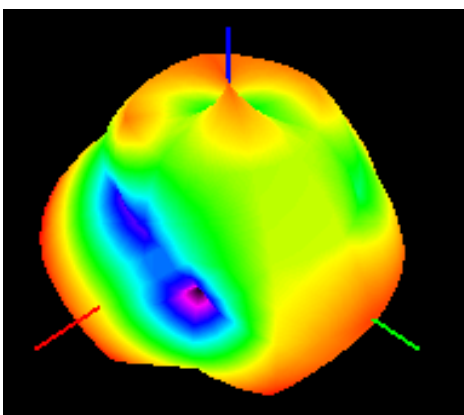
2.4GHz



2.45GHz

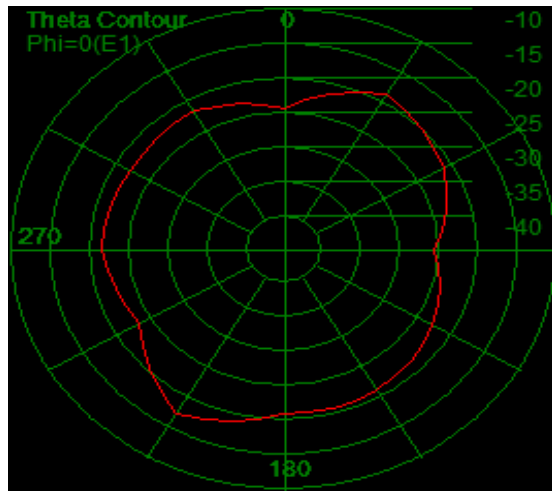


2.5GHz

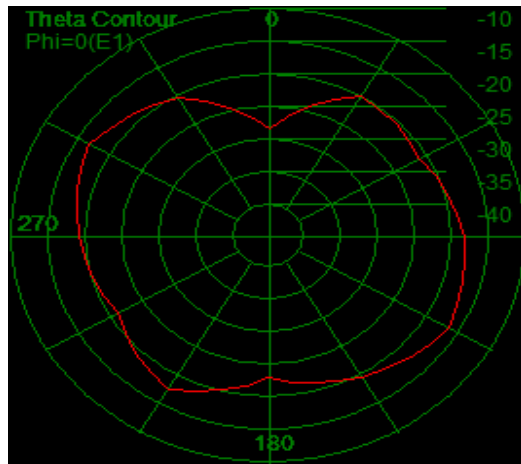


Radiation Patterns

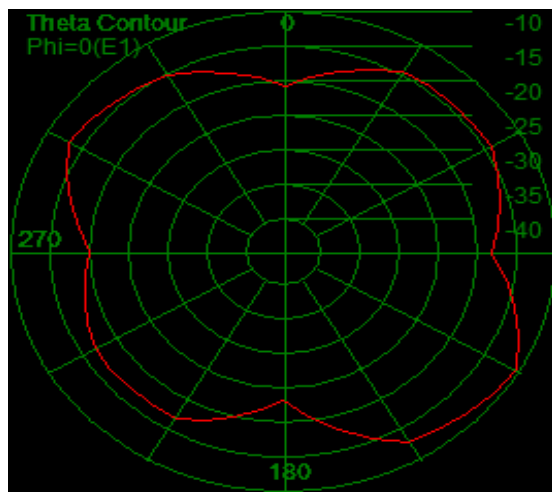
5.15GHz



5.55GHz



5.85GHz



Frequency(MHz)	2.4GHz	2.45GHz	2.5GHz
Peak gain(without cable loss)	2.11	2.34	2.19
Efficiency(without cable loss)	70%	66.4%	61.3%